

10.50.25.100 - Virtual Infrastructure Client

File Edit View Inventory Administration Plugins Help

Inventory Administration

vmvisor VMware Embedded ESX Server, e.x.p, 54621

Getting Started Summary Virtual Machines Resource Allocation Performance Configuration Users & Groups Events Permissions

**Your VMware ESX Server does not have any persistent storage.**  
 In order to run virtual machines, you must create at least one datastore where virtual machines and other system files will be maintained.  
 Note: If you plan to use iSCSI or a network file system (NFS), ensure that your storage adapters and network connections are properly configured before continuing.  
 To add storage now, [click here to create a datastore...](#)

**Hardware**

- Processors
- Memory
- Storage
- Networking
- Storage Adapters
- Network Adapters
- Health Status

**Storage Adapters** [Rescan...](#)

Device	Type	SAN Identifier
<b>Unknown</b>		
vmhba32	SCSI	
<b>iSCSI Software Adapter</b>		
iSCSI Software Adapter	iSCSI	

**Software**

- Licensed Features
- Time Configuration
- DNS and Routing
- Virtual Machine Startup/Shutdown
- Virtual Machine Swapfile Location
- Security Profile
- System Resource Allocation
- Advanced Settings

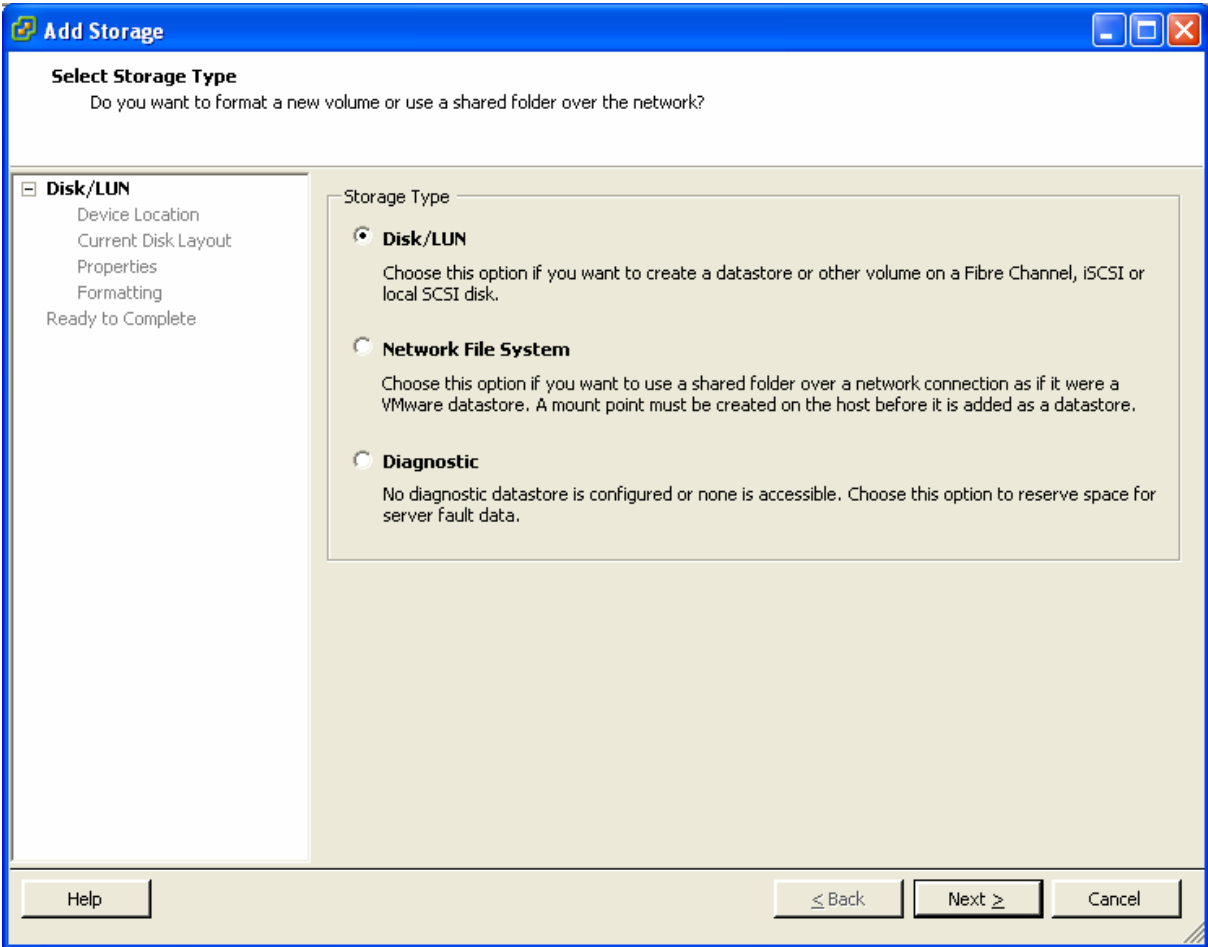
**Details**

**vmhba32**  
 Model: Unknown  
 Targets: 0

**Recent Tasks**

Name	Target	Status	Initiated by	Time	Start Time
------	--------	--------	--------------	------	------------

Tasks root



**Add Storage**

**Select Disk/LUN**  
If a device cannot be configured unambiguously, you will be asked to select a partition.

**Device Location**  
Current Disk Layout  
Properties  
Formatting  
Ready to Complete

SAN Identifier contains:  Clear

Device	Capacity	Available	SAN Identifier	LUN
vmhba32:0:0	983,00 MB	282,00 MB	Not Applicable	0

Help      ≤ Back      Next ≥      Cancel

**Add Storage**

**Current Disk Layout**  
You can partition and format the entire device, all free space, or a single block of free space.


**Device Location**  
**Current Disk Layout**  
Properties  
Formatting  
Ready to Complete

Review the current disk layout:

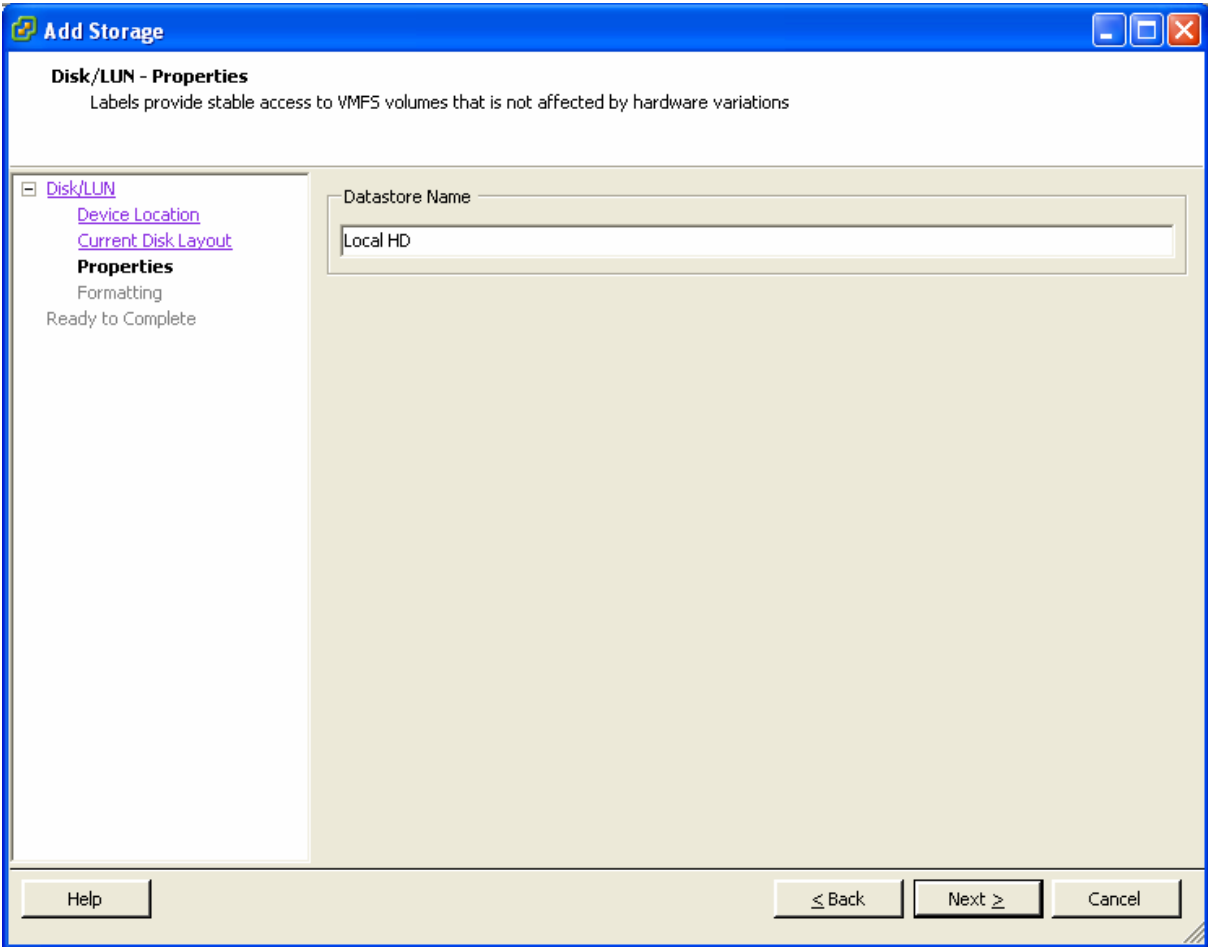
Device	Capacity	Target Identifier	LUN
/vmfs/devices/disks/...	983,00 MB	vmhba32:0:0	0

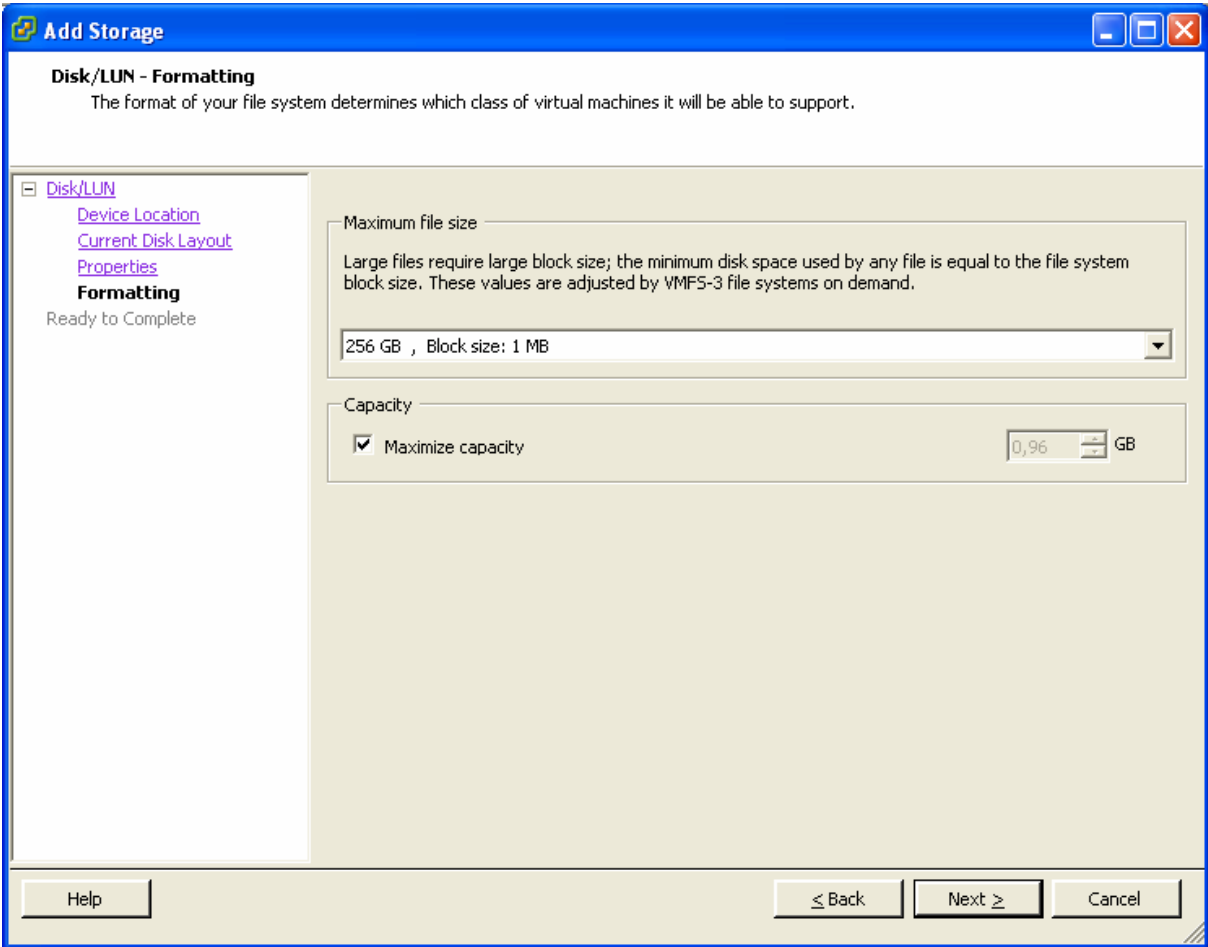
  

Primary Partitions	Capacity	Description
DOS 16-bit <32M	3,00 MB	
DOS 16-bit >=32M	31,00 MB	
DOS 16-bit >=32M	31,00 MB	
Linux native	109,00 MB	
DOS 16-bit >=32M	521,00 MB	
Free space	282,00 MB	

 Warning: The current disk layout will be destroyed. All file systems and data will be lost permanently

Help      ≤ Back      Next ≥      Cancel





**Add Storage**

**Ready to Complete**  
Review this summary before completing the wizard.

**Disk/LUN**  
**Ready to Complete**

Review the proposed disk layout:

Device	Capacity	Target Identifier	LUN
/vmfs/devices/disks/...	983,00 MB	vmhba32:0:0	0

**Primary Partitions**

Capacity	Description
982,00 MB	VMFS


The following VMware file system will be created:

**Properties**  
Datastore name: Local HD

**Formatting**  
File system: VMFS-3  
Block size: 1 MB  
Maximum file size: 256 GB

Help      ≤ Back      Finish      Cancel

**Error**

 Error during the configuration of the host: Unable to find filesystem for partition vmhba32:0:0:1

OK